

# South Gloucestershire Landscape Character Assessment

## Annex II: Strategic Viewpoints

### South Gloucestershire Council

**Final Draft Report for Adoption Chapter 19**

Prepared by LUC

September 2024



Version	Status	Prepared	Checked	Approved	Date
1	Draft Method and Pilot	E White L Jewitt	K Davies	K Davies	03.04.2023
2	Draft Report	L Jewitt V Kakar	E White	K Davies	16.05.2023
3	Draft Report	E White L Jewitt	E White	K Davies	14.07.2023
4	Final Draft	E White L Jewitt	E White	K Davies	01.11.2023
5	Final Draft (updated following New Local Plan Phase 3 consultation)	L Jewitt	E White	K Davies	12.06.2024
6	Final Draft Report for Adoption	L Jewitt	E White	K Davies	11.09.2024



**Land Use Consultants Limited**

Registered in England. Registered number 2549296. Registered office: 250 Waterloo Road, London SE1 8RD. Printed on 100% recycled paper

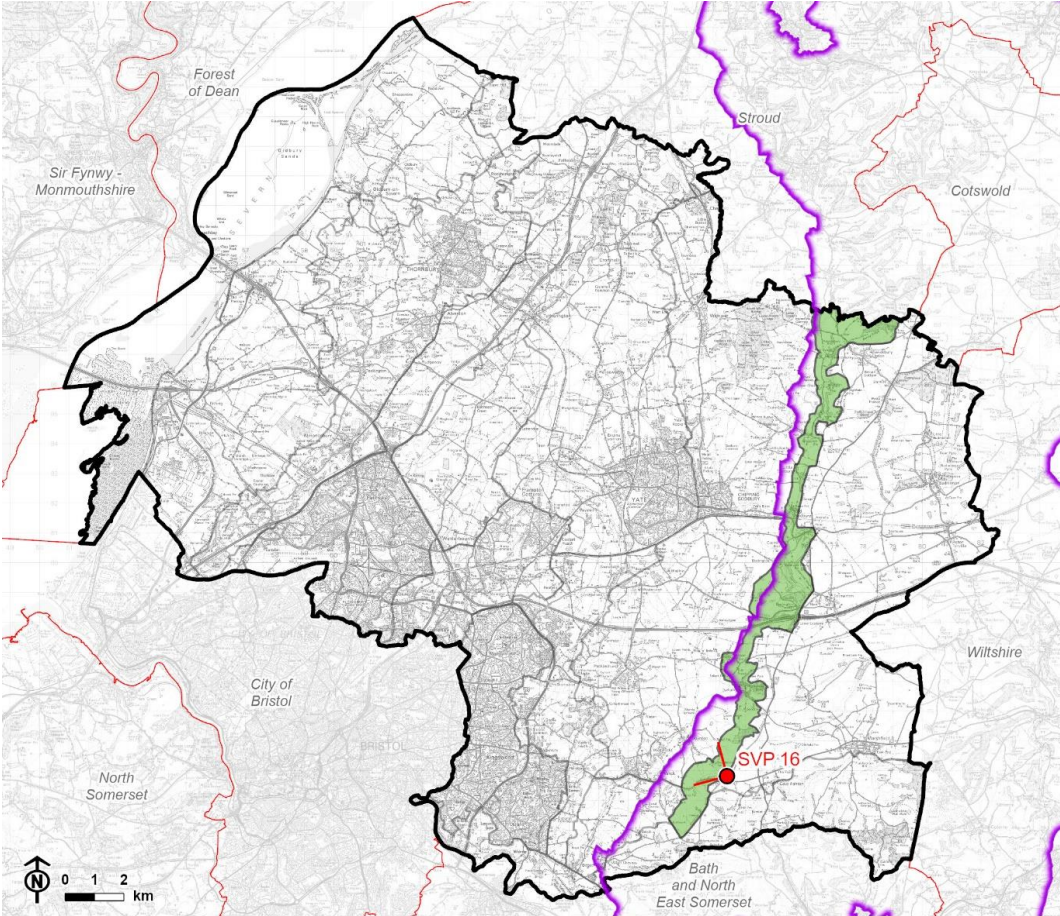
# Contents

<b>Chapter 19</b>	<b>135</b>
Strategic Viewpoint 16: Tog Hill	
Characteristics	140
Summary	141

# Chapter 19

## Strategic Viewpoint 16: Tog Hill

Figure 19.1: Location of Strategic Viewpoint 16 and landscape character context



© Natural England copyright © Crown copyright and database rights, Ordnance Survey licence number 100023410 (2024).

CB:HS, EB:shayler\_h LUC 12274\_FiguresUpdates\_MayJune2024 07/06/2024  
Source: LUC, SGDC, NE, OS


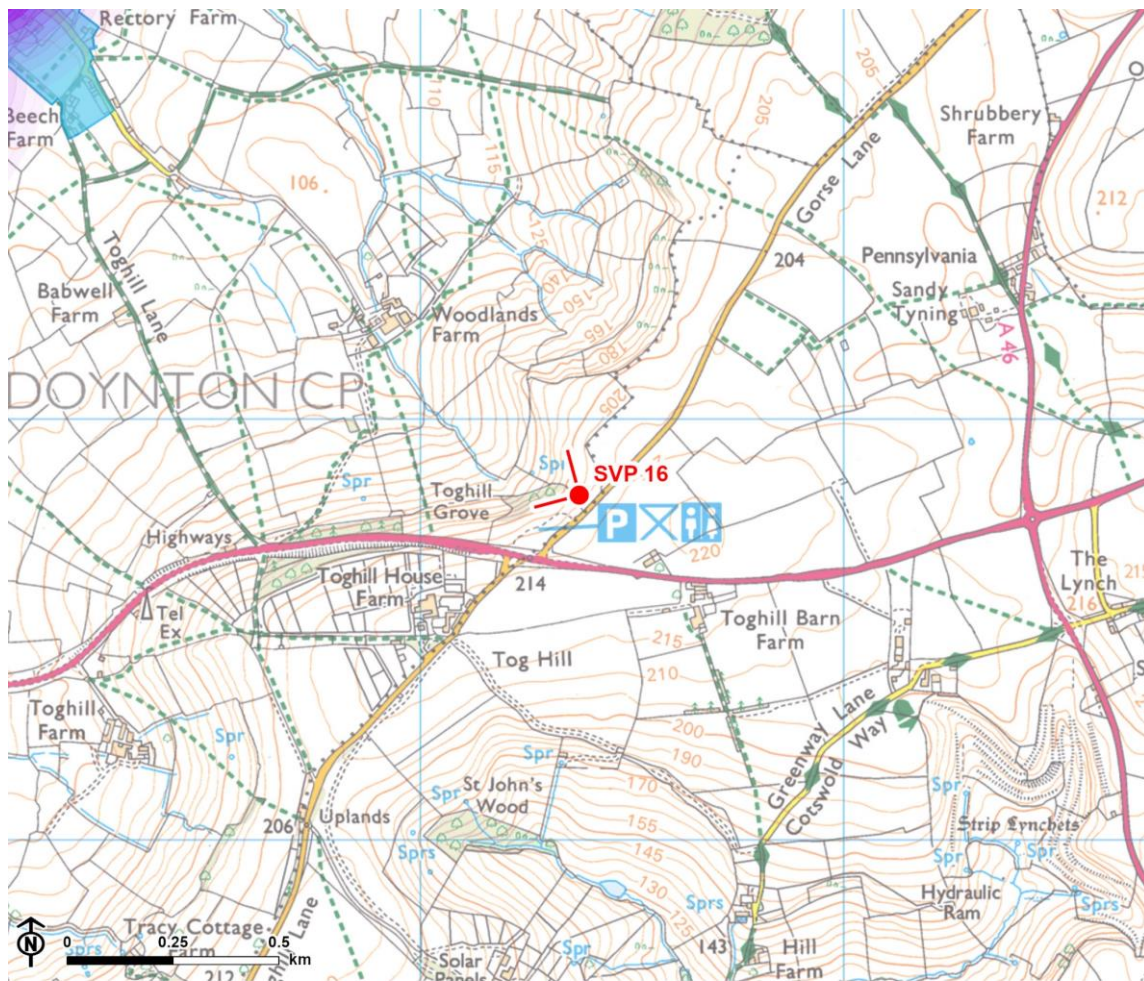
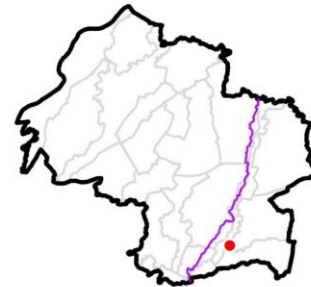
-  Council boundary
-  Neighbouring local authority
-  Cotswolds National Landscape (AONB) boundary
-  LCA 4: Cotswold Scarp
-  Strategic viewpoint and angle

Figure 19.2: Detailed map of the location of Strategic Viewpoint 16



© Natural England. © Historic England. Contains Ordnance Survey data © Crown copyright and database rights, Ordnance Survey licence number 100023410, 2024.

-  Council boundary
-  Cotswolds National Landscape (AONB) boundary
-  Conservation area
-  Strategic viewpoint and angle



## Viewpoint Information

**Grid reference:** ST 73224 72719

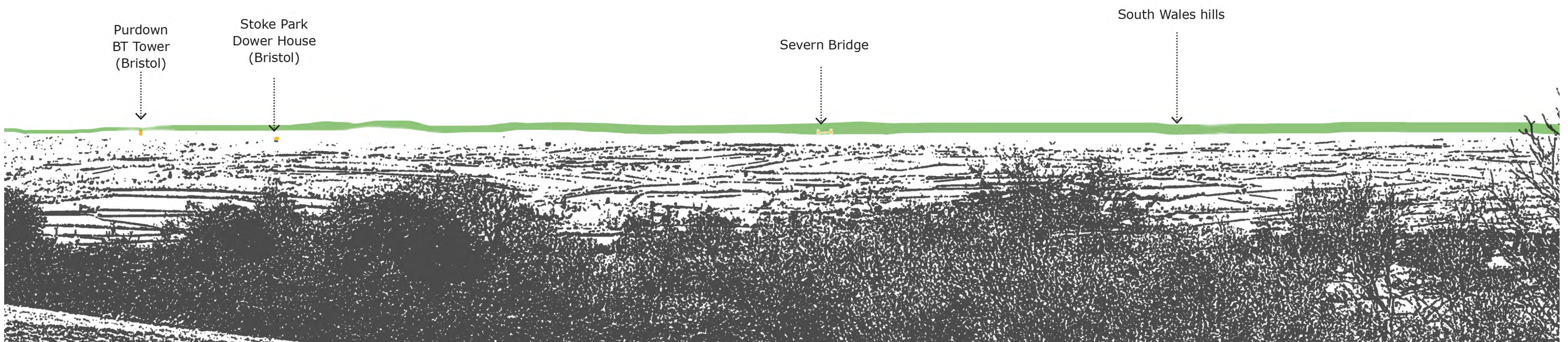
**View location:** Tog Hill Picnic Site, Gorse Lane, Doynton.


**View direction:** View north, south and west from LCA 4: Cotswold Scarp, across LCA 6: Pucklechurch Ridge and Boyd Valley, LCA 12: Westerleigh Vale and Oldland Ridge, and in longer distance views to LCA 14: Kingswood.

**Relationship with Visually Important Hillside (VIH):** The viewpoint is located along the Cotswold Scarp VIH.

**Experienced by:** Visitors to the Tog Hill picnic site, and recreational users of public footpath LDN/36/30.

Figure 19.3: View Composition of Strategic Viewpoint 16



 Key landscape feature

 Landmark / historic feature

Figure 19.4: Full Panoramic Photograph of Strategic Viewpoint 16



Strategic Viewpoint 16: Tog Hill



Strategic Viewpoint 16 (continued)



## Characteristics

### Popularity, access and facilities

- The viewpoint is recorded on OS mapping as a picnic site with car parking and toilet facilities, and is likely to attract many visitors as a result.
- The viewpoint location is noted in LCA 4: Cotswold Scarp, which states that *"in particular important viewpoints from the scarp include... Toghill picnic site together with sections of the Cotswold Way permit expansive views of the vale landscape below and as far as Wales in the distance."*
- The viewpoint is publicly accessible from Gorse Lane and via public footpath LDN/36/30.
- Picnic benches and a toposcope are provided to facilitate enjoyment and interpretation of the view.

### Relationship with the Cotswolds National

#### Landscape (CNL)

- The viewpoint is located within the CNL and enables panoramic views to and from the designated landscape.
- Views from the Cotswold Scarp are considered to be a special quality of the designated landscape, as set out in the CNL Management Plan.

### Quality, value and features of the view

- Tog Hill is one of the highest points within South Gloucestershire and so this elevated viewpoint provides a sweeping panoramic view (180°) along the Cotswold Scarp VIH to the north-west, west and south-west over a large proportion of the district. In middle-distance views, the adjacent landscapes of the Pucklechurch Ridge and Boyd Valley and Golden Valley are seen (characterised by medium-scale mixed fields, interspersed with occasional small

## Chapter 19 Strategic Viewpoint 16: Tog Hill

woodlands and copses, and a dispersed settlement pattern of scattered farmsteads). Longer distance views look towards the Westerleigh Vale and Oldland Ridge landscape (characterised by a mixed pattern of woodland, grassland and agricultural fields, with the urban edge of Bristol adjacent to the west). The view extends towards the levels and estuary with the distinctive hillsides of South Wales forming a distinctive backdrop.

- The Purdown BT Tower and Dower House in Stoke Park Estate form landmark features within Bristol 12-13km away. The Severn Bridge and Prince of Wales Bridge form distant landmark features over 23km away.
- A locally distinctive group of three wind turbines near Tytherington are visible 14km away against the relatively low-lying landform; although do not detract from the overall composition of the view given the breadth of the view.

## Summary

The Tog Hill viewpoint is categorised as a SVP as it meets most of the criteria to some extent. It is a popular viewpoint and likely to attract many visitors as it provides picnic and toilet facilities; it is noted in the South Gloucestershire Landscape Character Assessment as being a natural observation point from which to appreciate the landscape; it is located on a public footpath with picnic benches and a toposcope facilitating enjoyment and interpretation of the view; it allows appreciation of the Cotswold National Landscape and provides a notable view from the designated landscape; it provides a panoramic view that takes in notable landscape features and landmark features across most of South Gloucestershire and extends to the hills of South Wales.

Report produced by LUC

# Report produced by LUC

## **Bristol**

12th Floor, Colston Tower, Colston Street, Bristol BS1 4XE

0117 929 1997

bristol@landuse.co.uk

## **Cardiff**

16A, 15th Floor, Brunel House, 2 Fitzalan Rd, Cardiff CF24 0EB

0292 032 9006

cardiff@landuse.co.uk

## **Edinburgh**

Atholl Exchange, 6 Canning Street, Edinburgh EH3 8EG

0131 202 1616

edinburgh@landuse.co.uk

## **Glasgow**

37 Otago Street, Glasgow G12 8JJ

0141 334 9595

glasgow@landuse.co.uk

## **London**

250 Waterloo Road, London SE1 8RD

020 7383 5784

london@landuse.co.uk

## **Manchester**

6th Floor, 55 King Street, Manchester M2 4LQ

0161 537 5960

manchester@landuse.co.uk

## **landuse.co.uk**

Landscape Design / Strategic Planning & Assessment

Development Planning / Urban Design & Masterplanning

Environmental Impact Assessment / Landscape Planning & Assessment

Landscape Management / Ecology / Historic Environment / GIS & Visualisation